

OUR THREE-MODULE SERIES

MODULE 1 Cement the foundation

- Elementary Level: "Best Practices for Learning Loss Recovery in the Early Grades"
- Middle School Level: "Best Practices for Learning Loss Recovery in the Middle Grades"

These modules each feature a context of trauma-based instruction. Each module presents content-aligned strategies using STAAR MASTER® Teacher Guides appropriate to grade level, based on a guided selection of key learning targets.



MODULE 2 Build welcoming spaces for recovery

- Elementary Level: "Power Groups for Success"
- Middle School Level: "Personalized Instruction and Learner Diversity"

After teachers select "dynamite" strategies using STAAR MASTER® materials for their small groups in Module 1, teachers use four RTI-aligned instructional approaches (above) to ensure all learners are engaged in learning recovery.



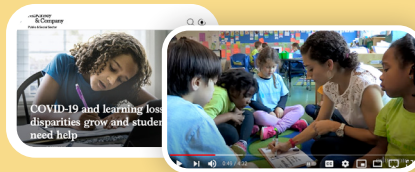
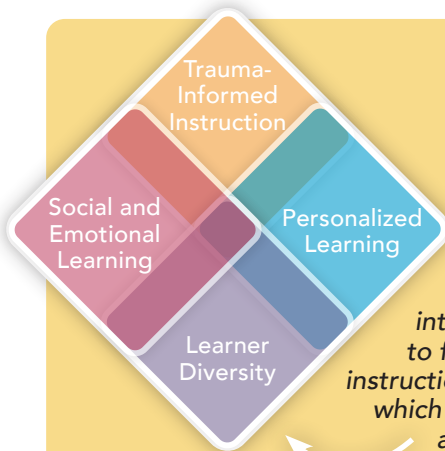
MODULE 3 Polish for learning mastery

- Elementary Level: "STAAR MASTER® Is the Radar, You Are the Guide"
- Middle School Level: "Launch Your Middle School Students Into Success"

STAAR MASTER® items help teachers plot the direction from recovery to mastery with a strong connection to reading comprehension, as appropriate to grade level. This way, all students are placed on the "radar" for learning recovery.



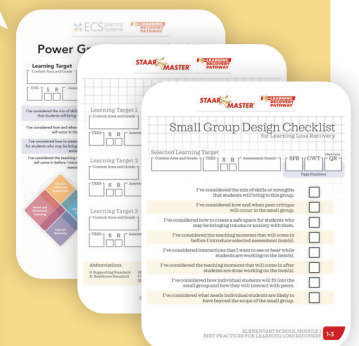
WHAT WE BELIEVE IN



Research-based videos and articles provide teachers with real-world examples of best practice with small group strategies, including several from Texas school districts

Our modules introduce teachers to four overlapping instructional approaches which frame reflection and discussion at multiple points

Practical activities completed during sessions help teachers plan dynamic strategies using STAAR MASTER® materials with real-time guidance from peers and presenter



Teachers have frequent opportunities to plan and journal improvements to their teaching practices as they incorporate the use of STAAR MASTER® materials



Padlet reflection
How will this transform your teaching craft?